



DURATION 04 DAYS
PRIVATE LODGE SAFARI

EXPLORE the Manyara NP and Ngorongoro Crater, the world's largest free standing caldera, teeming with wildlife.

DISCOVER Serengeti National Park, the most likely place in Eastern Africa to see the huge number of animals.

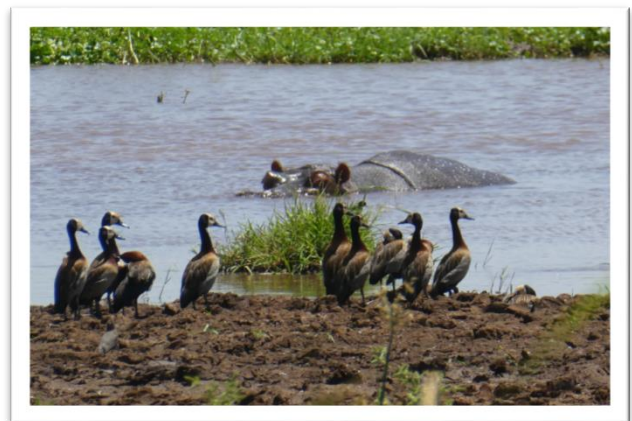
ENJOY a combination of ideally situated permanent and mobile tented camps and small lodges.

Itinerary

Day 01... LAKE MANYARA NATIONAL PARK

Today after breakfast we leave in the morning and drive to Lake Manyara National Park. Despite the park's small size, the park's vegetation is diverse, ranging from savanna to marshes and Acacia woodland, enabling it to support a remarkable variety of habitat. In addition to a striking setting and peaceful surroundings, Lake Manyara's main attractions are its superb birdlife, its tree climbing lions and its hippos, which you can observe at a closer range here than at most places (nowadays it's a game of chance due to climatic change and human activities around the park). Lake Manyara have also the Hot Springs formed due to the penetration of water from highlands to the Earth Cracks which are caused by the tectonic forces under the Earth. To the east of the park is the alkaline lake Manyara which at certain times of the year hosts tens of thousands of flamingos as well as a diversity of other bird's life. We will leave the park in the evening and drive to the lodge for overnight.

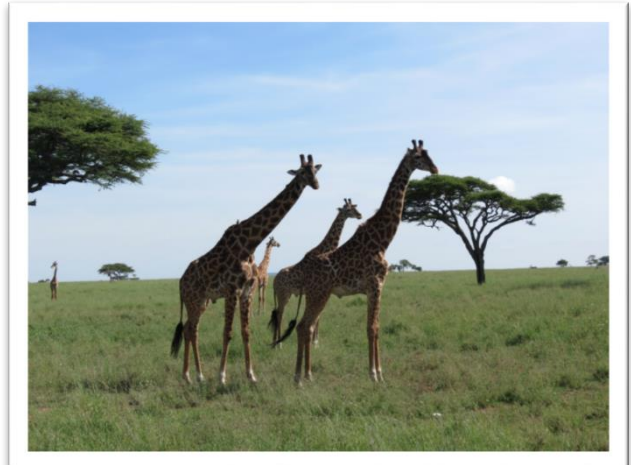
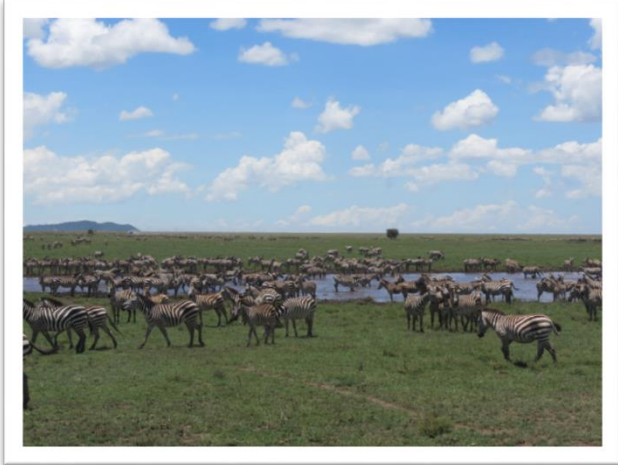
STANDARD ACCOMODATION: [EILEEN'S TREE HOTEL](#)



DAY 02... SERENGETI NATIONAL PARK

After having breakfast from the hotel, we start driving to Serengeti National Park at 7:30 am. It's approximately 159 km and 3 hours driving from your hotel to Serengeti entrance. On the way to Serengeti we traverse the Great Rift Valley as well as the Ngorongoro crater, and therefore doing a game drive till evening. Later in the evening we drive to the hotel for overnight.

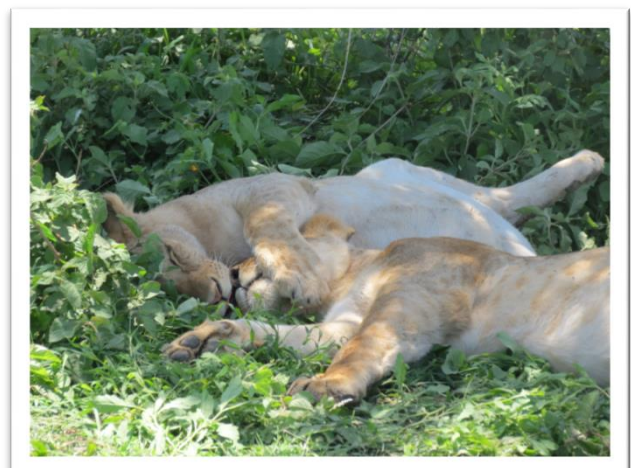
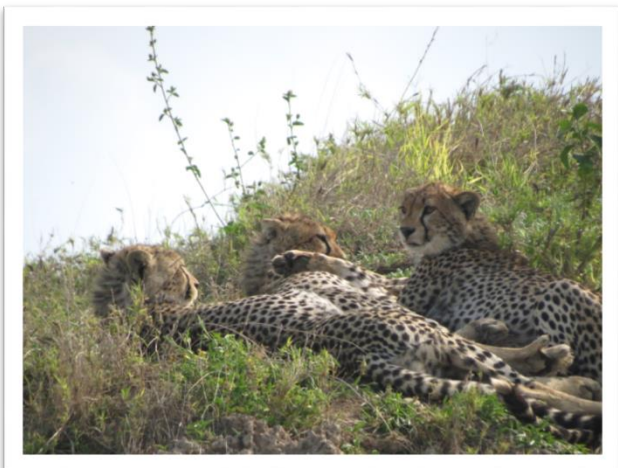
STANDARD ACCOMODATION: [KUBU KUBU TENTED LODGE](#)



DAY 03... FULL GAME DRIVE AT SERENGETI

These full day game viewing are the best to see the full range of what this magnificent park has to offer. We will take our lunch box with us. The excursion departs at around 6:30 am and we return back to the lodge by evening 5:30 pm.

STANDARD ACCOMODATION: [KUBU KUBU TENTED LODGE](#)



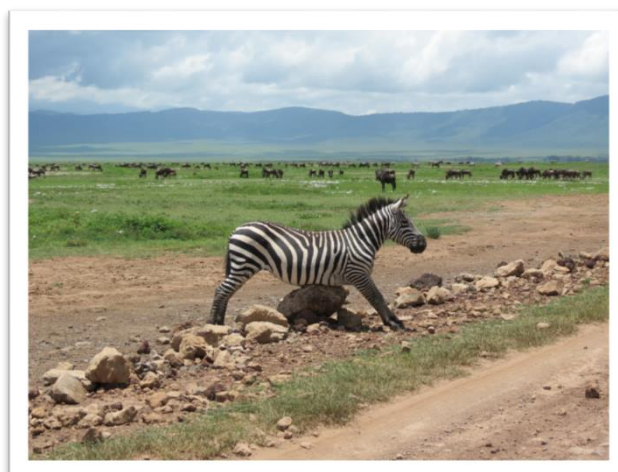
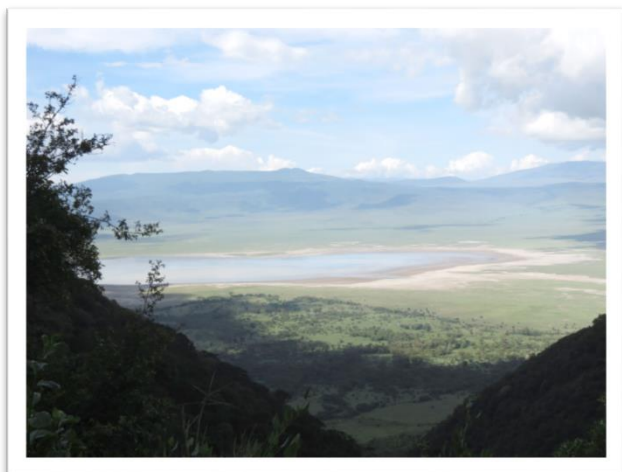
DAY 04... NGORONGORO CRATER

Having early breakfast today we will drive to Ngorongoro (with lunch box) and on the way we will visit the Masai village. We will explore the famous Ngorongoro Crater called the eighth wonder of the world, the crater won't fail to take your breath away as you stand on the rim looking down a 10-mile wide crater floor with abundant wildlife. The Ngorongoro Crater is the largest unbroken volcanic caldera in the world covering approximately 260 square km with walls rising 600 meters from the crater floor. Before the Ngorongoro Volcano exploded and collapsed 2 million years ago, it was one of the world's tallest mountains. Now, it is home to more than 30,000 large

mammals - mainly gazelle, buffalo, eland, hartebeest and warthog - and has the highest predator density in the world.

Later afternoon we drive you **back to Arusha** where you will spend the last night at Crest Safari Lodge

STANDARD ACCOMODATION: [CREST SAFARI LODGE](#)



What's Included?

- Transport to the parks and back
- Park entry fees
- Full board on Meals during safari as shown in the itinerary
- All transfers according to itinerary during safari.
- The safari will be with English speaking safari driver/guide
- Our fleet of custom built, 4x4 Safari Land Cruisers are the best safari vehicles in Tanzania. We limit passengers in each vehicle so everyone has a window seat and plenty of space, and fully retractable roofs allow 360 degree wildlife observation. All time power supply for charging the cameras and phones.
- Unlimited mileage.
- Unlimited Mineral drinking water and sodas in the car
- Tribes visit

Exclusions

- International Air fares
- Expenses of personal nature such as **visas**, travel/baggage insurance, laundry, beverages
- Tipping of the driver guide and other staff offering services

-----THANK YOU FOR CHOOSING **KILEO TOURS & SAFARIS** -----